



INSTALL

**NEXT**  
audiocom



HOME

[www.erlatech.hu](http://www.erlatech.hu)  
1173 Budapest Összekötő utca 1.  
+36 70 938 3505  
+36 70 938 3506



PORTABLE

[nextaudiocom.com](http://nextaudiocom.com)



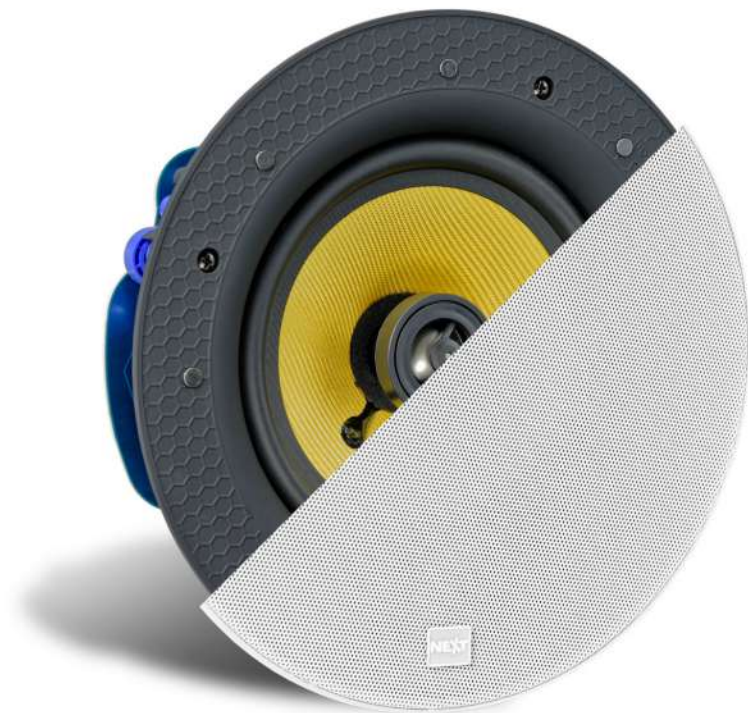
# INSTALL SPEAKERS





# C6 pro

## 6.5" PREMIUM CEILING SPEAKER



100V/8Ω  
Input



HF Driver  
Protection



Frameless  
Design



Detachable  
Logo



Environment  
Equalizer



Magnetic  
Grille

### TECHNICAL SPECIFICATIONS

**Frequency Response (-6dB):** 65Hz - 20kHz

**Nominal Coverage:** 100° Conical

**RMS Power:** 60W

**Nominal Impedance:** 8Ω (Transformer bypass)

**Maximum SPL (calculated):** 110.8dB

**Transformer Taps 100V:** 30W, 15W, 7.5W

**Transformer Taps 70V:** 15W, 7.5W, 3.75W

**Low Frequency Driver:** 6.5" Reinforced Polymer Cone Woofer

**High Frequency Driver:** 0.75" Pivoting (±10°) Titanium Dome Tweeter

**Special Features:** Adjustable Environment Equalizer (±3dB)

**Dimensions (ØxP):** 234mm x 87mm (9.21" x 3.43")

**Net Weight:** 1.79kg (3.94lb)

**Accessories:**

- Black Frameless Magnetic Grille for NEXT Audiocom C6 PRO (not included)

### ENVIRONMENTAL EQUALIZER

YOU CAN USE THE ENVIRONMENTAL EQ TO ADJUST THE SOUND OF YOUR SPEAKER TO THE ACOUSTICS CHARACTERISTICS OF YOUR INSTALLATION

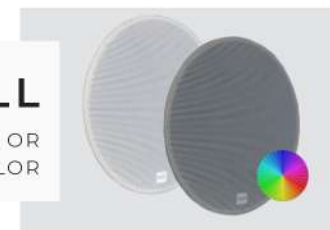


### ADJUSTABLE TWEETER

WITH THE ADJUSTABLE TWEETER IT WILL BE POSSIBLE TO HAVE THE SOUND WHERE YOU WANT IT

### CUSTOM GRILL

AS AN OPTION, YOU CAN PURCHASE THE GRID IN BLACK COLOR, OR ALTERNATIVELY, PAINT YOUR GRIDS IN THE DESIRED COLOR





# C6B<sub>pro</sub> PAR

## 6.5" PREMIUM BLUETOOTH CEILING SPEAKERS



Remote  
Control



Dedicated  
Presets



Frameless  
Design



Detachable  
Logo



Magnetic  
Grille



aptX  
Low Latency

**ACTIVE** **PASSIVE**



Bluetooth

### TECHNICAL SPECIFICATIONS

**Frequency Response (-6dB):** 62Hz - 20kHz

**Nominal Coverage:** 100° Conical

**Amplifier Power:** 30W + 30W (Passive Speaker Output)

**Nominal Impedance:** 8Ω (C6 B Pro Slave)

**Maximum SPL (calculated):** 107.8dB (2 Coupled Speakers)

**Low Frequency Driver:** 6.5" Polypropylene Cone Woofer

**High Frequency Driver:** 0.75" Pivoting (±10°) Silk Dome Tweeter

**Audio Signal Inputs:** Stereo Bluetooth v5.0 aptX and Stereo Line-in (2 x RCA)

**Special Features:** Tool Free Install, Remote Control, 50% Level Limiter, Mono-Stereo Switch

**DSP Presets:** 10 Presets

**Wireless Range:** >10m (32.8ft)

**Dimensions (ØxP):** 234mm x 105mm (9.21" x 4.1")

**Net Weight:** Master - 1.5kg (3.3lb), Slave - 1.5kg (3.3lb)

**Accessories:**

- Black Frameless Magnetic Grille for NEXT Audiocom C6B PRO (not included)

### BLUETOOTH aptX HD

TAKE ADVANTAGE OF THE LOW LATENCY BLUETOOTH APTX  
SOUNDING YOUR SPACES EASILY



### ADJUSTABLE TWEETER

WITH THE ADJUSTABLE TWEETER IT WILL BE POSSIBLE TO HAVE THE  
SOUND WHERE YOU WANT IT

### REMOTE CONTROL

WITH THE REMOTE CONTROL, IT IS POSSIBLE TO CONTROL  
YOUR C6B PRO REMOTELY AND WIRELESSLY







# C6

## 6.5" CEILING SPEAKER



Discreet  
Design

100V

100V  
Line Input



Frameless  
Design



Detachable  
Logo



Easy  
Install



Ultra-Thin  
Design

### TECHNICAL SPECIFICATIONS

**Frequency Response (-10dB):** 70Hz - 16kHz

**Nominal Coverage:** 85° Conical

**RMS Power:** 6W

**Maximum SPL (calculated):** 97.8dB

**Transformer Taps 100V:** 6W, 3W, 1.5W

**Transformer Taps 70V:** 3W, 1.5W, 0.75W

**Full-Range Driver:** 6.5" Dual Cone Woofer

**Dimensions (ØxP):** 190mm x 79mm (7.48" x 3.11")

**Net Weight:** 0.67kg (1.48lb)

### COMPETITIVE PRICE

THE C6 CEILING SPEAKER IS AN EXCELLENT CHOICE  
FOR YOUR BUDGET-FRIENDLY INSTALLATION.



### SCALED INSTALLATIONS

THE C6 IS A PERFECT SOLUTION FOR YOUR LARGE INSTALLATION  
EX: SHOPPING CENTERS, PAVILIONS, RETAIL STORES, ETC.

### EASY CONNECTION & MULTI-TAP SYSTEM

TAKE ADANTAGE OF THE MULTI-TAP FAST CONNECTOR FOR AN EASY AND  
QUICK CONNECTION SELECTING THE TAP YOU WANT TO USE





# P6

## 6.5" PENDANT SPEAKER



100V/8Ω  
Input



Suspension Cable  
Included



Discreet  
Design



Easy  
Install



Detachable  
Logo



Weatherproof

IP66

### TECHNICAL SPECIFICATIONS

Frequency Response (-6dB): 90Hz - 20kHz

Nominal Coverage: 90° Conical

RMS Power: 40W

Program Power: 80W (8Ω)

Nominal Impedance: 8Ω

Maximum SPL (calculated): 104dB

Transformer Taps 100V: 5W, 10W, 20W, 40W

Transformer Taps 70V: 2.5W, 5W, 10W, 20W

Low Frequency Driver: 6.5" Polypropylene Cone Woofer

High Frequency Driver: 1" Silk Dome Tweeter

IP Rating: IP66

Dimensions (WxHxD): 208 x 280 x 208mm (8.19" x 11" x 8.19")

Net Weight: 3kg (6.61lb)

Accessories:

- Wall Bracket for NEXT Audiocom P6 (not included)
- Garden Accessory for NEXT Audiocom P6 (not included)

### WALL BRACKET

WITH THE P6 YOU CAN EASILY SELECT THE NEEDED POWER. THE DOUBLE CONNECTOR ALLOWS YOU TO CONNECT SEVERAL P6 IN PARALELL



### INTEGRATED TRANSFORMER

P6 HAS AN INTEGRATED LINE TRANSFORMER THAT ALLOWS YOU TO SELECT THE POWER POSITION YOU WANT (TAPS)

### OUTDOOR ACCESSORY

WITH THE OUTDOOR ACCESSORY, YOU CAN USE YOUR P6 IN THE GARDEN THANKS TO THE IP66 RATE PROTECTION





# W3 PAR

## 3" MINI SATELLITE SPEAKER



Surround  
Ready



Pan&Tilt  
Adjustment



Space  
Saving



Easy  
Install



Bracket  
Included



Discreet  
Design

WALL  
SPEAKERS

### TECHNICAL SPECIFICATIONS

**Frequency Response (-6dB):** 150Hz - 20kHz

**Nominal Coverage:** 120° Cónica

**RMS Power:** 15W

**Program Power:** 30W

**Nominal Impedance:** 8Ω

**Sensitivity (1W, 1m):** 87dB

**Maximum SPL (calculated):** 102dB

**Full-Range Driver:** 2.75" Paper Cone Full-Range Loudspeaker

**Input Connectors:** Phoenix Type Pluggable Terminal Block

**Grille:** Acoustic Transparent Plastic Grille

**Cabinet Material:** Rugged ABS Plastic

**Dimensions (WxHxD):** 95 x 93 x 108mm (3.7" x 3.7" x 4.3")

**Net Weight:** 0.5kg (1.1lb) - each W3

### ADJUSTABLE BRACKET

THE W3 SPEAKERS INCLUDE AN EASY-TO-INSTALL BRACKET THAT  
ALLOWS YOU TO ADJUST THE PAN AND TILT



### ELEGANT AND DISCREET DESIGN

TO KEEP YOUR INSTALLATION ALWAYS ELEGANT, THE LOGO  
OF YOUR W3 IS SMALL AND DISCRETE



### EASY INSTALLATION

THE INSTALLATION OF YOUR W3 IS EASY AND FAST, WITH THE INCLUDED  
BRACKET AND PHOENIX PLUG FOR CONNECTION





# W4 PAR

## 4" PASSIVE SPEAKER (8Ω/100V)



Low Impedance  
Input



100V  
Line Input



Hor./Ver.  
Installation



Easy Install



Bracket  
Included



Discreet  
Design

WHITEBLACK

### TECHNICAL SPECIFICATIONS

**Frequency Response (-6dB):** 90Hz - 18kHz

**Nominal Coverage:** 100°H x 100°V

**RMS Power:** 20W

**Program Power:** 40W

**Nominal Impedance:** 8Ω

**Sensitivity (1W, 1m):** 86dB

**Maximum SPL (calculated):** 99dB

**Transformer Taps 100V:** 1.25W, 2.5W, 5W, 10W

**Low Frequency Driver:** 4" Polypropylene Cone Woofer

**High Frequency Driver:** 0.5" Mylar Dome Tweeter

**Input Connectors:** Binding Posts

**Cabinet Material:** High-grade Rugged Polypropylene

**Dimensions (WxHxD):** 140 x 215 x 135 - w/ U-Bracket: 140 x 245 x 158mm

**Net Weight:** 1.8kg (3.97lb) - U-Bracket Included

### ADJUSTABLE BRACKET

INSTALL YOUR W4 EASILY BY ADJUSTING THE WALL BRACKET AND POSITIONING IN THE DESIRED POSITION



### INTEGRATED TRANSFORMER

W4 HAS AN INTEGRATED 100V TRANSFORMER THAT ALLOWS YOU TO SELECT THE TAP ON THE POSITION YOU WANT

### BLACK AND WHITE

TO FIT ALL YOUR INSTALLATION NEEDS, THE W4 SPEAKERS ARE AVAILABLE IN BLACK AND WHITE







WHITE/BLACK

## TECHNICAL SPECIFICATIONS

**Frequency Response (-6dB):** 70Hz - 18kHz

**Nominal Coverage:** 100°H x 100°V

**RMS Power:** 40W

**Program Power:** 80W

**Nominal Impedance:** 8Ω

**Sensitivity (1W, 1m):** 88dB

**Maximum SPL (calculated):** 104dB

**Transformer Taps 100V:** 3.75W, 7.5W, 15W, 30W

**Low Frequency Driver:** 6.5" Polypropylene Cone Woofer

**High Frequency Driver:** 1" Silk Dome Tweeter

**Input Connectors:** Binding Posts

**Cabinet Material:** High-grade Rugged Polypropylene

**Dimensions (WxHxD):** 205 x 310 x 195 - w/ U-Bracket: 250 x 345 x 225mm

**Net Weight:** 4kg (8.82lb) - U-Bracket Included

# W6 PAR

## 6.5" PASSIVE SPEAKER (8Ω/100V)



Low Impedance  
Input



100V  
Line Input



Hor./Ver.  
Installation



Easy Install



Bracket  
Included



Discreet  
Design

## ADJUSTABLE BRACKET

INSTALL YOUR W6 EASILY BY ADJUSTING THE WALL BRACKET AND POSITIONING IN THE DESIRED POSITION



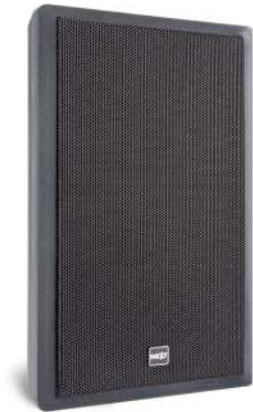
## INTEGRATED TRANSFORMER

W6 HAS AN INTEGRATED 100V TRANSFORMER THAT ALLOWS YOU TO SELECT THE TAP ON THE POSITION YOU WANT

## BLACK AND WHITE

TO FIT ALL YOUR INSTALLATION NEEDS, THE W6 SPEAKERS ARE AVAILABLE IN BLACK AND WHITE





# W5F PAR

## 5.25" ULTRA SLIM WALL SPEAKER



Low Impedance  
Input



HF Driver  
Protection



Detachable  
Logo



Easy  
Install



Ultra-Thin  
Design



Discreet  
Design

### TECHNICAL SPECIFICATIONS

**Frequency Response (-6dB):** 100Hz - 20kHz

**Nominal Coverage:** 110°H x 110°V

**RMS Power:** 25W

**Program Power:** 50W

**Nominal Impedance:** 8Ω

**Sensitivity (1W, 1m):** 89dB

**Maximum SPL (calculated):** 106dB

**Low Frequency Driver:** 5.25" Inverted Magnet Woofer

**High Frequency Driver:** 0.5" Mylar Dome Tweeter

**Input Connectors:** Binding Post

**Cabinet Material:** ABS Plastic

**Dimensions (WxHxD):** 183 x 271 x 38mm (7.2" x 10.67" x 1.5")

**Net Weight:** 0.9kg (1.98lb)

### ULTRA-THIN DESIGN

WITH THEIR ULTRA-THIN DESIGN THE W5F FLAT SPEAKERS FIT ALL YOUR INSTALLATIONS WHERE THE DESIGN IS IMPORTANT



### QUICK AND SIMPLE INSTALLATION

INSTALL YOUR W5F EASILY THANKS TO THEIR VERY SIMPLE INSTALLATION AND CONNECTION

### DETACHABLE LOGO

FOR YOUR DISCREET INSTALLATION YOUR W5F IS PERFECTLY INTEGRATED, AND IF NECESSARY IT IS POSSIBLE TO REMOVE THE LOGO



SOON  
AVAILABLE  
1<sup>st</sup> QUARTER  
2021



WHITEBLACK

## TECHNICAL SPECIFICATIONS

**Frequency Response (-6dB):** 32Hz-200Hz

**RMS Power:** 100W

**Program Power:** 200W

**Subwoofer Driver:** 10" Polypropylene Cone Woofer

**Audio Signal Inputs:** Stereo Line-in, High Level Input

**Speaker Output:** High Level Output

**Input Connectors:** 2 x RCA, Spring-Loaded Terminal

**Power Supply:** AC 115V/230V, 50/60 Hz

**Special Features:** Invisible Down-Firing Speaker, LPF Frequency Adjustment

**Cabinet Material:** Non-Resonant MDF

**Dimensions (WxHxD):** 300 x 394 x 328mm (11.8" x 15.5" x 12.9")

**Net Weight:** 9.54kg (21lb)

# S10

## 10" ACTIVE SUBWOOFER



RCA  
Input



High Level  
In/Out



Surround  
Ready



Auto  
Standby



Adjustable  
Crossover



Discreet  
Design

## CONTEMPORARY DESIGN

IMPROVED DESIGN WITH AN IMPRESSIVE PERFORMANCE, THE S10 IS AN EXCELLENT OPTION FOR YOUR INSTALLATION



## PERFECT COMBINATIONS

YOUR S10 PERFECTLY MATCHES THE RANGE OF CEILING/WALL SPEAKERS AND SOUND BARS FROM NEXT AUDIOCOM



## DOWN-FIRING AND BASS REFLEX

THE INTEGRATED TECHNOLOGY ALLOWS AN EXPERIENCE OF DEEP AND DEFINED BASS KEEPING THE SYSTEM VERY COMPACT





# INSTALL AMPLIFIERS



# A40

## STEREO AMPLIFIER WITH BLUETOOTH



60W



### TECHNICAL SPECIFICATIONS

**Frequency Response (-6dB):** 20Hz - 20kHz

**Amplifier Power:** 2 x 30W @ 4Ω / 2 x 20W @ 8Ω

**THD+N:** <0.1%

**SNR:** >82dB

**Wireless Connection System:** Bluetooth 2.1 + EDR

**Wireless Range:** 10m (32.8ft)

**Audio Signal Inputs:** Bluetooth and Stereo Line-in (Stereo Jack 3.5mm)

**Power Supply:** AC 110V/240V, 50/60 Hz

**Cabinet Material:** Aluminum

**Dimensions (WxHxD):** 100 x 35 x 125mm (3.9" x 1.4" x 4.9")

**Net Weight:** 0.33kg (0.73lb)



Minimum Impedance



Discreet Design



Multi-Device Compatibility



AUX Input



Space Saving



Ultra-Thin Design

### INTEGRATED BLUETOOTH

TAKE ADVANTAGE OF THE BLUETOOTH CONNECTION, SOUNDING YOUR SPACES EASILY



### ULTRA COMPACT DESIGN

THE A40 IS A 60W AMPLIFIER WITH AN ULTRA SMALL SIZE TO INTEGRATE IN YOUR SMALL AND MEDIUM INSTALLATIONS



### VERSATILE INTEGRATION

THE A40 ALLOWS YOU TO INSTALL IT WHERE IT IS MOST CONVENIENT FOR YOU. IT CAN BE INSTALLED ON A WALL FOR SPACE SAVING



# A200

## STEREO AMPLIFIER WITH BLUETOOTH



**320 W**



### TECHNICAL SPECIFICATIONS

**Frequency Response (-6dB):** 20Hz - 20kHz

**Amplifier Power:** 2 x 160W @ 4Ω / 2 x 100W @ 8Ω

**THD+N:** <0.1%

**SNR:** >90dB

**Wireless Connection System:** Bluetooth v4.1 aptX

**Wireless Range:** 10m (32.8ft)

**Audio Signal Inputs:** Bluetooth and Stereo Line-in (2 x RCA)

**Power Supply:** ~110 - 240Vin / 36VDC, 4.5A Out

**Cabinet Material:** Aluminum

**Dimensions (WxHxD):** 117 x 39 x 211mm (4.6" x 1.5" x 8.3")

**Net Weight:** 0.65kg (1.43lb)



Minimum Impedance



RCA Input



Gold Plated Binding Posts



Space Saving



Multi-Device Compatibility



Ultra-Thin Design

### EASY CONNECTION

THE INTEGRATION AND CONNECTION OF YOUR A200 WITH THE ITS PERIPHERALS IS PRACTICAL AND SIMPLE



### COMPACT AND POWERFUL

THE A200 ALLOWS YOU TO HAVE A POWERFUL AMPLIFIER IN A COMPACT AND CONTEMPORARY DESIGN BOX



### BLUETOOTH aptX HD & LINE INPUTS

TAKE ADVANTAGE OF THE BLUETOOTH APTX HD AND SOUND YOUR SPACES EASILY



nextaudiocom.com





# MX120

## MIXER AMPLIFIER WITH BLUETOOTH



100V

100V Line Output



HF Driver Protection



USB Player



Detachable Logo



Remote Control



2 MIC Inputs

120W



Bluetooth

### TECHNICAL SPECIFICATIONS

**Frequency Response (-6dB):** 80Hz - 16kHz

**Amplifier Power:** 120W

**Speaker Output:** 100V

**THD+N:** <0.5%

**SNR: MIC:** >74dB - **LINE:** >80dB

**Input Sensitivity:**

**MIC:** 60mV (±15mV)

**LINE:** 300mV (±20mV)

**Audio Signal Inputs:** 1 x RCA (Stereo), 1 x MIC (TS), 1 x MIC (XLR w/ Phantom) or AUX (XLR), 1 x Line-in (Phoenix Connector), 1 x 100V IN (Phoenix Connector), USB, Bluetooth

**Protections:** DC Voltage, Overload, Short-Circuit

**Power Supply:** AC 180V-250V / 50Hz-60Hz | DC 24V - 6A

**Special Features:** Priority Microphone, Microphone Automatic Level Reduction (Ducking)

**Cabinet Material:** Aluminum/Steel

**Dimensions (WxHxD):** 200 x 44 x 190mm (7.9" x 1.7" x 7.5")

**Net Weight:** 1.5kg (3.3lb)

### MULTIMEDIA PLAYER

MX120 INCORPORATES A MULTIMEDIA PLAYER THAT ALLOWS YOU TO CONTROL AND REPRODUCE THE USB



### INPUTS VERSATILITY

WITH MX120, YOU CAN HAVE MULTIPLE AUDIO SIGNAL SOLUTIONS USB, RCA, XLR, AUX AND BLUETOOTH



### INTEGRATED BLUETOOTH

TAKE ADVANTAGE OF THE BLUETOOTH CONNECTION AND SOUND YOUR SPACES EASILY



nextaudiocom.com

# MX350

## 6-ZONE MIXER AMPLIFIER



**350W**

### TECHNICAL SPECIFICATIONS

**Frequency Response (-6dB):** 80Hz - 16kHz

**Amplifier Power:** 350W

**Speaker Output:** 70V, 100V, 4Ω - 16Ω

**100V Zone Output:** 6 Zones

**THD+N:** <1%

**SNR:** MIC: >71dB - LINE: >85dB

**Input Sensitivity:**

MIC: 3mV (±0.5mV)

LINE: 300mV (±50mV)

**Audio Signal Inputs:** 3 x RCA (Stereo) , 4 x MIC (TRS), USB, SD Card, FM Radio

**Audio Signal Outputs:** 1 x RCA (Stereo)

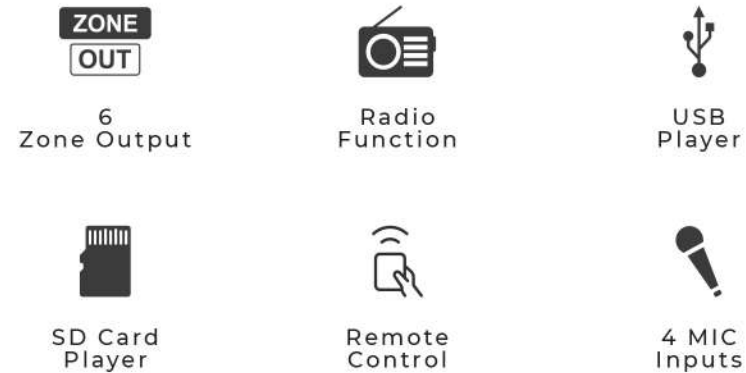
**Power Supply:** AC 220V-240V / 50Hz-60Hz

**Special Features:** Priority Microphone, Microphone Automatic Level Reduction (Ducking), Call Flag (Chime)

**Cabinet Material:** Aluminum/Steel

**Dimensions (WxHxD):** 483 x 88 x 338mm (19" x 3.5" x 13.3")

**Net Weight:** 16kg (35.27lb)



### MULTIMEDIA PLAYER

MX350 INCORPORATES A MULTIMEDIA PLAYER THAT ALLOWS YOU TO CONTROL AND REPRODUCE THE USB AND SD CARD



### 6 INDEPENDENTLY CONTROLLED AREAS

WITH THE MX350, YOU CAN CONTROL UP TO 6 ZONES, COMPLETELY INDEPENDENT



### OPERATION AT 70V, 100V E 4-16Ω

YOU CAN OPERATE YOUR MX350 @ 4-16Ω OR 70/100V AND INSTALL IT ACCORDING YOUR NEEDS



nextaudiocom.com



**HOME**  
SEAKERS





# MODUS<sub>2</sub>

## PORTABLE SOUNDBAR WITH BLUETOOTH



Portable



Subwoofer  
Effect



Remote  
Control



Multi-Device  
Compatibility



Battery  
Powered



Discreet  
Design

**2x10W**



### TECHNICAL SPECIFICATIONS

**Bluetooth Version:** v5.0

**Bluetooth Range:** 10m (32.8ft)

**Output Power:** 20W (2x10W)

**Drivers:** 2 x 2" Full-Range Loudspeakers, 2 x Passive Radiators (Subwoofer)

**Audio Signal Inputs:** Bluetooth, AUX, Micro SD Card, USB

**Frequency Response:** 100Hz - 20.000Hz

**Battery Capacity:** 4000mAh

**Battery Playback Time:** 4 to 6 Hours

**Battery Charging Time:** 3 to 4 Hours

**Dimensions (WxHxD):** 42 x 7.3 x 6.5cm (16.5" x 2.8" x 2.5")

**Net Weight:** 900g

### PASSIVE SUBWOOFER

GET THE FEEL OF LIVE MUSIC THANKS TO THE 3D STEREO  
AND THE 2 INCORPORATED PASSIVE SUBWOOFERS



### HANDSFREE

ENJOY THE HANDS-FREE FUNCTIONALITY PAIRING THE MOBILE PHONE  
WITH YOUR MODUS<sub>2</sub>

### AUTONOMY

AN EXCELLENT PORTABILITY EXPERIENCE OF UP TO 6 HOURS  
OF MUSIC REPRODUCTION WHEREVER YOU ARE





**ACTIVE PASSIVE**  
**15W + 15W**



## TECHNICAL SPECIFICATIONS

**Full-Range Driver:** 2x 2.5" Full-Range Loudspeaker

**Wireless Connection System:** Bluetooth v4.0

**Wireless Range:** 10m (32.8ft)

**Program Power:** 15W + 15W

**Audio Signal Inputs:** Bluetooth, AUX, Optical, USB, Micro SD Card

**Audio Signal Outputs:** Subwoofer Output or Other System Output (Unfiltered, Full-Range)

**Presets:** Rock, Pop, Jazz, Live, Club, Dance, Hall, Soft, Flat, Classical

**Control:** IR Remote Control

**Power Supply:** DC 24V / 2.5A

**Dimensions (WxHxD):** 980 x 55 x 60mm (38.6" x 2.2" x 2.4")

**Net Weight:** 1.9kg (4.18lb)

# SB3

## CONVERTIBLE SOUNDBAR WITH BLUETOOTH



2 Operation  
Modes



Remote  
Control



SD Card  
Player



Built-in  
Amplifier



USB  
Player



Optical

## VERSATILE USE

YOU CAN USE YOUR SB3 HORIZONTALLY OR DIVIDE IT AND USE IT IN 2 VERTICAL TOWERS TO FIT YOUR INSTALLATION



## SUBWOOFER OUTPUT

MAKE YOUR SB3 EVEN "BIGGER", ADDING THE S10 SUBWOOFER



## REMOTE CONTROL

WITH THE REMOTE CONTROL, IT IS POSSIBLE TO CONTROL YOUR C6B PRO REMOTELY AND WIRELESSLY







# **PORTABLE** SPEAKERS







**65W**



## TECHNICAL SPECIFICATIONS

**Frequency Response (-6dB):** 60Hz - 20kHz

**RMS Power:** 65W

**Drivers:** 1 x 6" Subwoofer; 2 x 3" Woofer; 2 x 1" Tweeter

**Wireless Connection System:** Bluetooth 4.2 + EDR + BLE

**Wireless Range:** 10m (32.8ft)

**Audio Signal Inputs:** Stereo Bluetooth, AUX (3.5mm Stereo Jack)

**Special Features:** NFC, TWS (Stereo), Power Bank USB 5V/2 A

**Battery Type:** Rechargeable 7.4V/6600mAh (Lithium-ion)

**Battery Charging Time:** 4 Hours

**Battery Playback Time:** Up to 20 Hours

**Dimensions (WxHxD):** 178 x 425 x 178mm (7" x 16.7" x 7")

**Net Weight:** 4.2kg (9.3lb)

**Accessories:**

- Transportation Bag for NEXT Audiocom MV3 (not included)

**Note:** 20 hours battery playtime is only for reference and may vary depending on music content and battery aging after numerous cycles.

# MV3

## BATTERY-POWERED BLUETOOTH PORTABLE SPEAKER



Portable



Easy  
Pairing



True Wireless  
Stereo



Subwoofer  
Effect



Multi-Device  
Compatibility



Battery  
Powered

## PORTABLE AND VERSATILE

TAKE YOUR MV3 WHEREVER YOU WANT, DUE TO THE REDUCED SIZE AND WEIGHT. WITH THE TWS STEREO YOU CAN PAIR THE 2ND MV3



## LONG BATTERY LIFE

THE 6600MAH BATTERY (INCLUDED) ALLOWS AN AUTONOMY OF UP TO 20H, AS WELL AS USE IT AS A POWER BANK



## ELEGANT AND DISCREET

MV3 DESIGN ALLOWS YOU TO HAVE A PORTABLE SPEAKER THAT EASILY INTEGRATES YOUR HOME OR OFFICE DESIGN



PORTABLE



nextaudiocom.com



**1100W**



# MV12

## 12" ACTIVE BLUETOOTH SPEAKER



Instrument  
Input



Stage  
Monitor



RCA  
Input



5 User  
Presets



Mic In



Multi-Device  
Compatibility

### TECHNICAL SPECIFICATIONS

**Frequency Response (-6dB):** 53Hz - 19.5kHz

**Maximum SPL (calculated):** 124dB (Full-Space)

**Nominal Coverage:** 90°H x 60°V

**Low Frequency Driver:** 12" Woofer -- 2" Voice Coil

**High Frequency Driver:** 1" Titanium Driver -- 1.75" Voice Coil

**Program/Peak Power:** 550W / 1100W

**Mixer:** 2 Channels

**Presets:** Flat, Music, External Subwoofer, Monitor, Voice

**Bluetooth Range:** 10m (32.8ft)

**Amplifier Technology:** Class D Amplifier with DSP

**Connectors:** Power: 1 x IEC, Signal Input, 2 x XLR/TRS Combo, 1 x 3.5mm Jack, 1 x Stereo RCA, Signal Output: 1 x XLR

**Cabinet Material:** Strengthen PP Plastic

**Dimensions (WxHxD):** 368 x 513 x 343mm (14.5" x 20.2" x 13.5")

**Net Weight:** 15.7kg

**Accessories:**

- Protective Cover for NEXT Audiocom MV12 (not included)

### 2 CHANNELS, BT AND 5 PRESETS

MV12 HAS A 2 CHANNEL MIXER, BLUETOOTH INCLUDED AND 5 PRESETS AVAILABLE TO SELECT AND SOUND YOUR SPACES WITH QUALITY



### VERSATILE USE

MV12 ALLOWS YOU TO USE IT IN A TRIPOD WITH TWO SETTINGS OF TILT, OR AS STAGE MONITOR

### ULTRA-COMPACT

THE MV12 IS AN ULTRA-COMPACT 12" SPEAKER, ALLOWING AN EASY HANDLE AND A PLEASANT DESIGN



PORTABLE



nextaudiocom.com





[www.cva.pt](http://www.cva.pt)



## BUTTERFLY

BUT • TER • FLY

*"Symbol of Next Audiocom's constant environmental concerns, also reflects the recent metamorphosis of the CVA Electronic group after more than 35 years of history on the professional audio."*



[nextaudiocom.com](http://nextaudiocom.com)

